

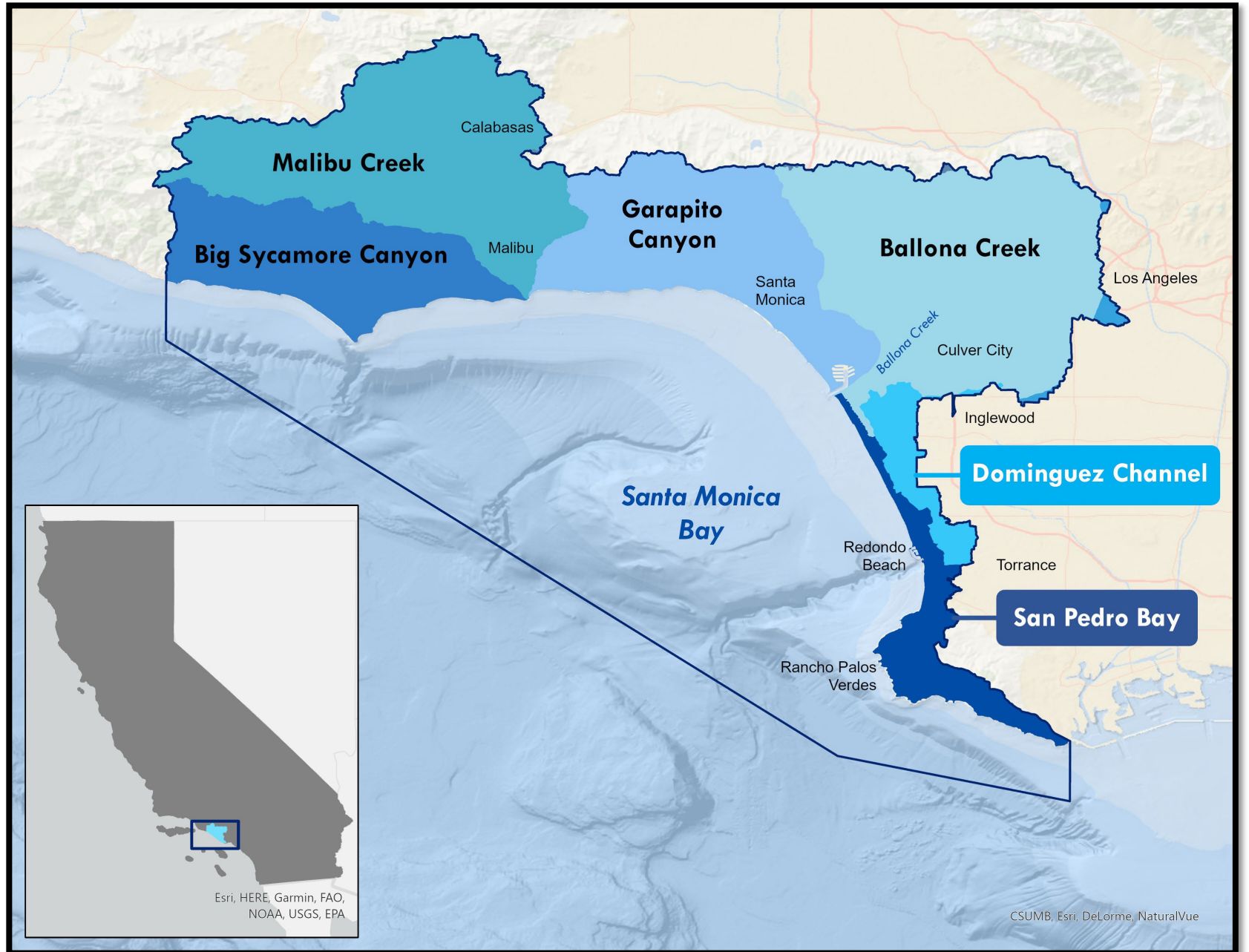
# Comprehensive Approach to Coastal Management

---

Santa Monica Bay National  
Estuary Program

[www.smbnep.org](http://www.smbnep.org)

# Santa Monica Bay National Estuary Program Study Area





Palos Verdes Kelp Restoration



Palos Verdes  
Abalone Restoration



Image courtesy  
of California  
Beaches

# Adamson House Living Shoreline

# Dune Restoration

Zuma Beach

Westward Beach

Santa Monica Beach

Dockweiler Beach

Manhattan Beach





# Beach Management Certification Project

Image courtesy of Beach Ecology Coalition



**Black Surfers Collective**

**Diversity in the Line Up**

Image courtesy of The Surf Bus Foundation



# Santa Monica Breakwater Rocky Intertidal Preserve



Image courtesy of Hotels.com



Tom Ford

[tford@santamonicabay.org](mailto:tford@santamonicabay.org)  
310-216-9827

[www.santamonicabay.org](http://www.santamonicabay.org)  
[@thebayfoundation](#) Instagram

