

Policy Summit
"One California, One Coast"



SAN FRANCISQUITO CREEK
JOINT POWERS AUTHORITY

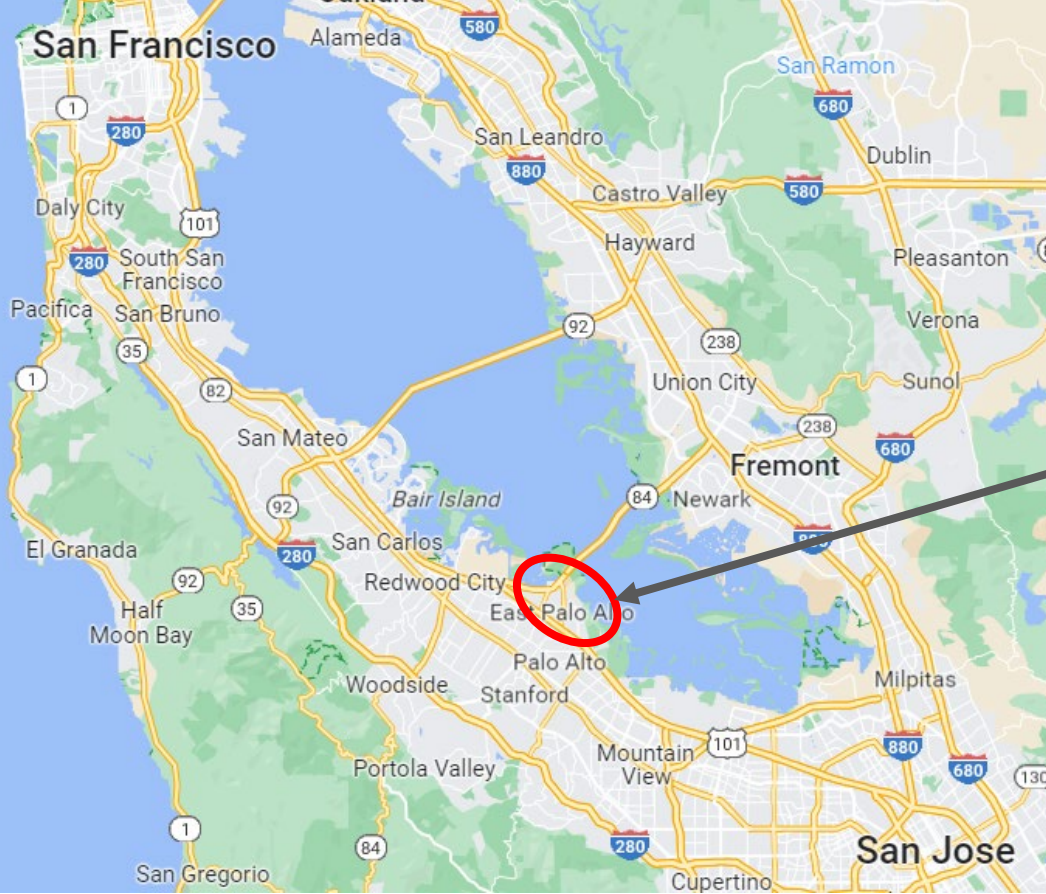
The Strategy to Advance Flood Protection, Ecosystems and Recreation along the San Francisco Bay (SAFER Bay) Project

Margaret Bruce, Executive Director,
San Francisquito Creek Joint Powers Authority



Five Members:

- San Mateo County Flood and Sea Level Rise Resiliency District
- Santa Clara Valley Water District
- City of East Palo Alto
- City of Menlo Park
- City of Palo Alto

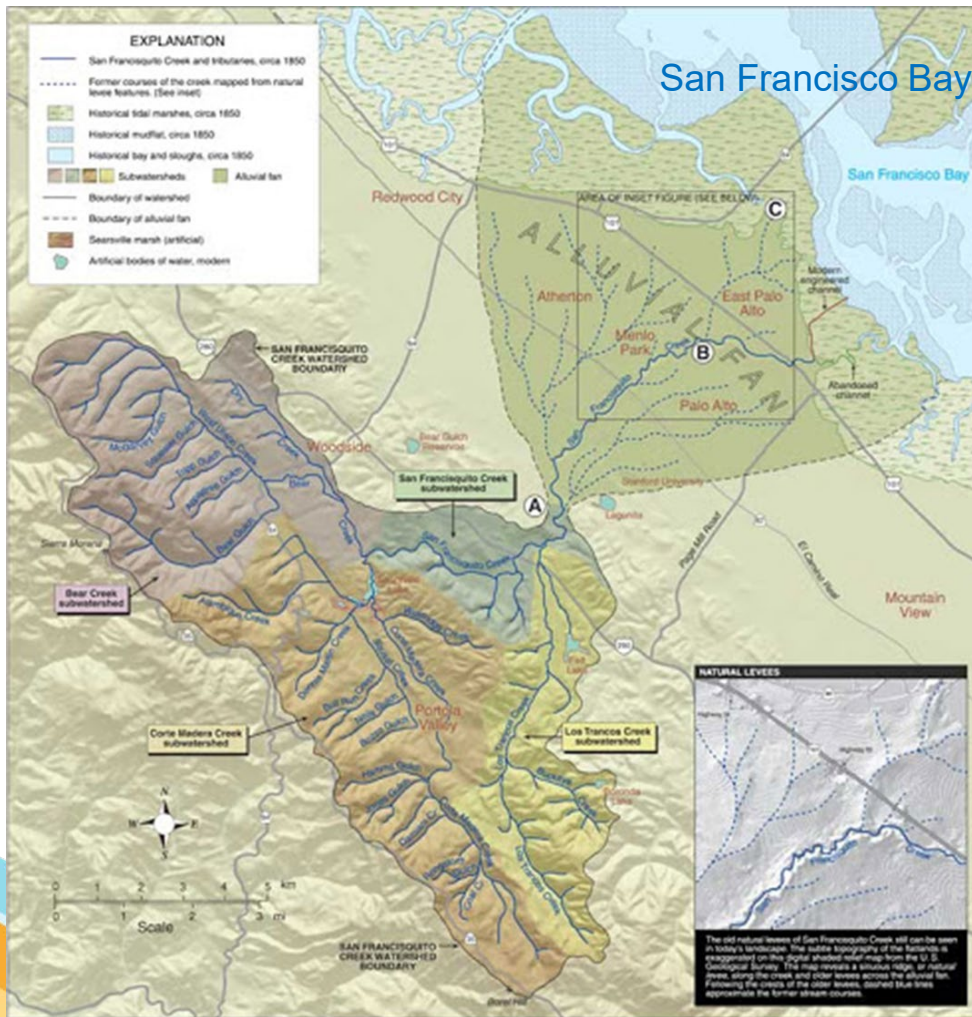


Where in the world is the SAFER Bay Project?

The South San Francisco Bay Shoreline in the Cities of Menlo Park and East Palo Alto

In the homeland of the Ohlone peoples

In the heart of “Silicon Valley”



The SFCJPA operates in a complex context:

- A 45 square mile watershed
- An urbanized flood plain
- An largely urbanized shoreline
- Many important human and natural systems at risk

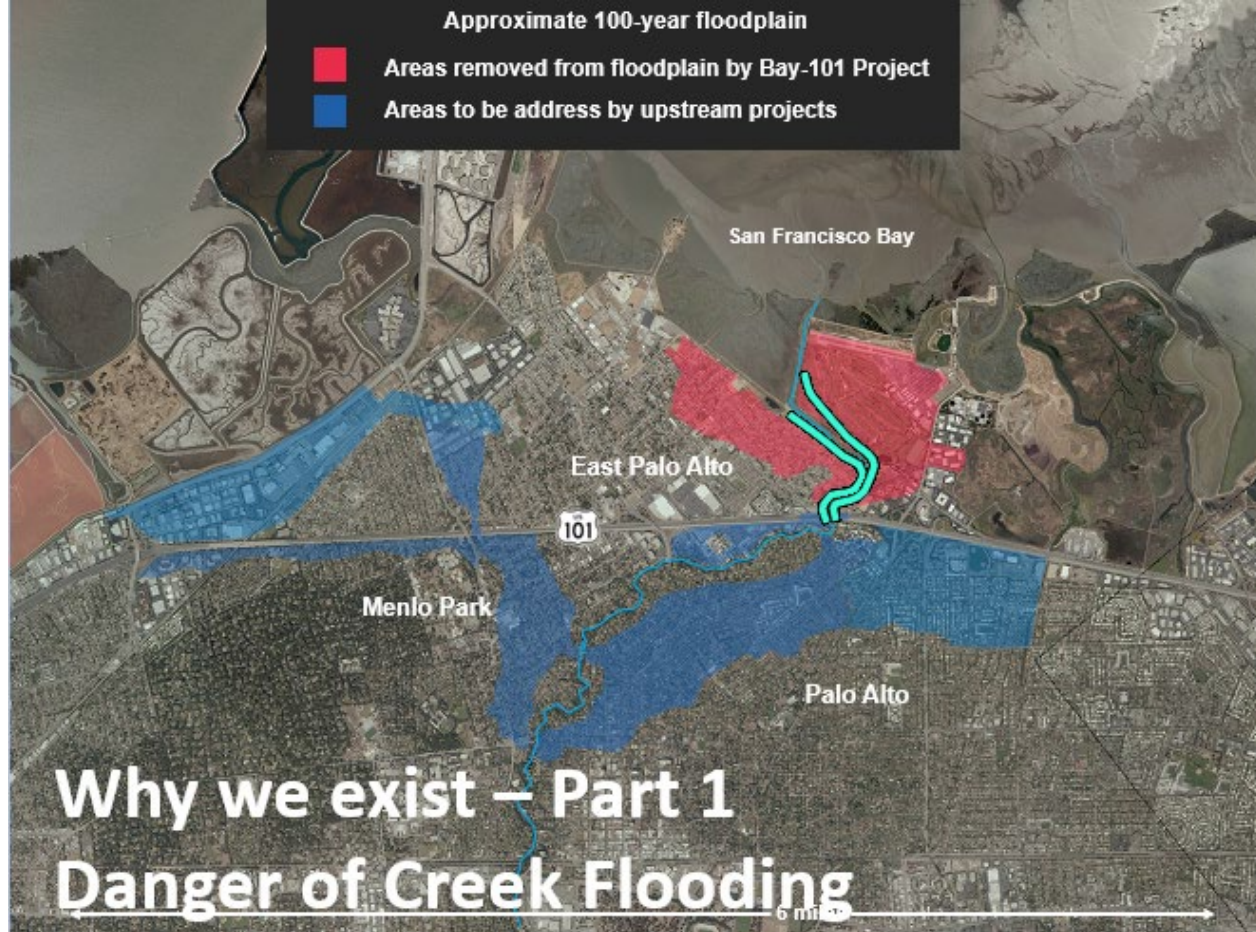
Approximate 100-year floodplain



Areas removed from floodplain by Bay-101 Project



Areas to be address by upstream projects





Why We exist – Part 2

Danger of Tidal and SLR Flooding

SAFER Bay Project

- 7 miles of urban coastline
- 20,000 residents
- Critical infrastructure
- Endangered species
- Emergent groundwater
- Superfund sites
- Bay Trail
- 100s of Stakeholders
- Complex land use policy issues!!
- Equity Priority Communities



Map of Disadvantaged Community Census Tracts



East Palo Alto and Menlo Park Equity Priority Communities

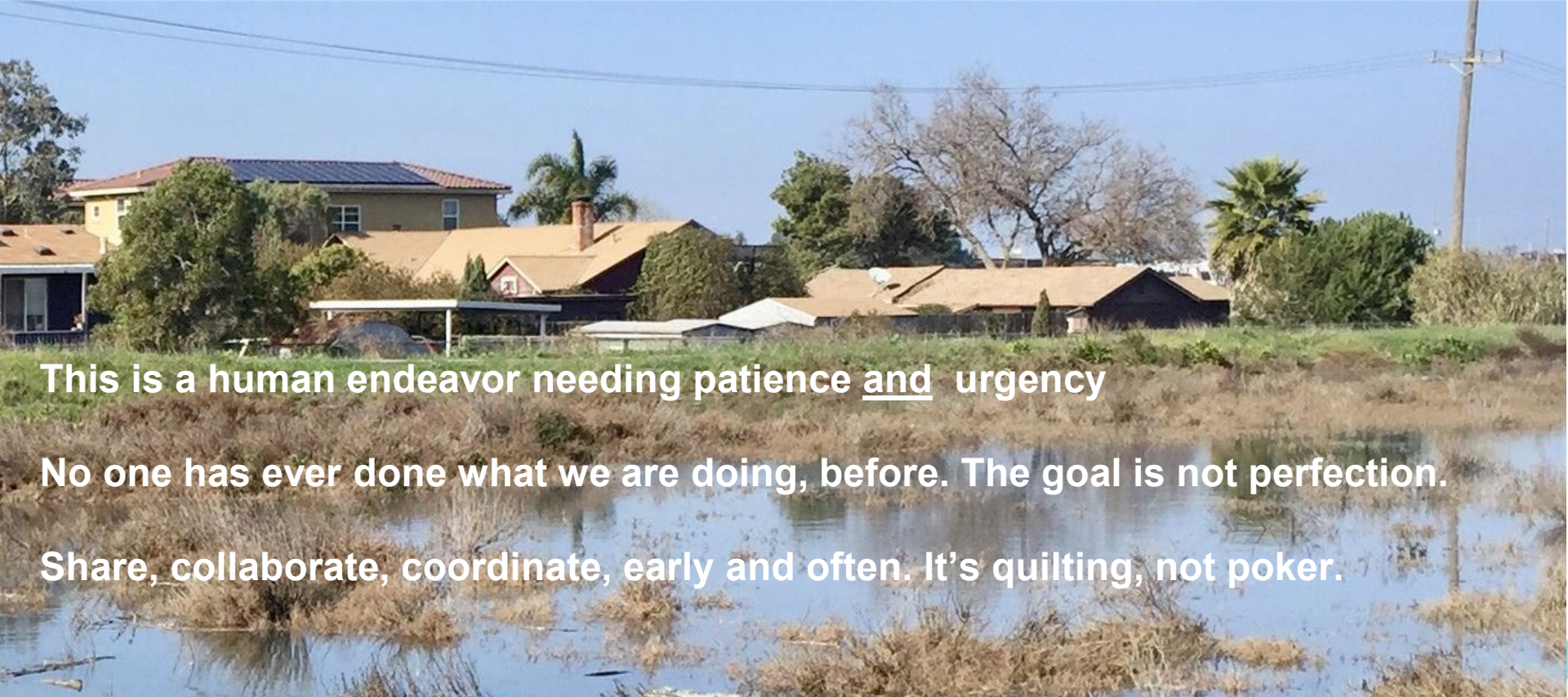
- SAFER Bay Project allies with key partners Nuestra Casa and Climate Resilient Communities for community engagement
- Community Advisory Groups meet quarterly.



SAFER Bay Project

Funding from:

- FEMA: BRIC and HMGP Programs (~\$85M inclusive of local match)
- San Francisco Bay Restoration Authority/Measure AA (~\$5M)



This is a human endeavor needing patience and urgency

No one has ever done what we are doing, before. The goal is not perfection.

Share, collaborate, coordinate, early and often. It's quilting, not poker.